

#### ⚠ If anyone has too much

If anyone has too much contact a doctor or your nearest Accident and Emergency Department (Casualty) taking this pack with you.

#### ⚠ If you forget to take the medicine

You should only take this medicine as required following the dosage instructions carefully. If you forget to take a dose, take the next dose when needed. **Do not** take a double dose.

#### 4. Possible side-effects

Like all medicines, this medicine can cause side-effects, although not everybody gets them.

If you experience any of the following stop using the medicine and seek medical help immediately:

- Allergic reactions including skin rashes (which may be severe and include blistering and peeling of the skin) and itching.

Other effects that may occur include:

- Nausea, vomiting, stomach pain or diarrhoea..

#### Reporting of side-effects

If you experience any side-effects, talk to your doctor, pharmacist or nurse. This includes any possible side-effects not listed here. You can also report side-effects directly via the Yellow Card Scheme at [www.mhra.gov.uk/yellowcard](http://www.mhra.gov.uk/yellowcard). By reporting side-effects, you can help provide more information on the safety of this medicine.

#### 5. Storing this medicine

Do not store this product above 30°C.

Store in the original container.

Do not use if bottle seal is broken when purchased.

Keep the product out of the reach and sight of children.

Do not use your medicine after the date shown as an expiry date on the packaging.

Medicines should not be disposed of via wastewater or household waste. Ask your pharmacist how to dispose of medicines no longer required. These measures will help to protect the environment. Retain carton for full instructions.

#### 6. Further information: What's in this medicine?

**The active ingredients in 5 ml of Benylin Chesty Coughs Non-Drowsy are:** 100 mg Guaifenesin and 1.1 mg Levomenthol.

**Other ingredients are:** Sucrose, liquid glucose, ethanol, glycerol, sodium citrate, saccharin sodium, citric acid monohydrate, sodium benzoate (E211), Ponceau 4R (E124), caramel (E150), carbomer, raspberry essence, natural sweetness enhancer and water.

#### What the medicine looks like

Benylin Chesty Coughs Non-Drowsy is a clear red syrup, available in 150 ml and 300 ml glass bottles.

**Marketing Authorisation holder:** McNeil Products Ltd, Maidenhead, Berkshire, SL6 3UG, UK.

PL 15513/0056 MA 100/00307

**300 ml e**



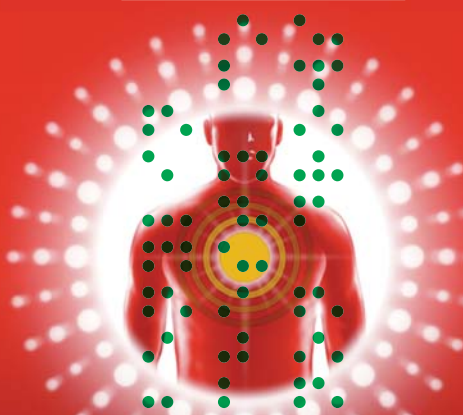
# Chesty Coughs

**NON-DROWSY**

**Guaifenesin & Levomenthol**

✓ Soothing effect

✓ Deep penetrating relief



When you're suffering from a deep, chesty cough, but still want to get on with your normal daily routine, Benylin Chesty Coughs Non-Drowsy works deep down to loosen phlegm, clear bronchial congestion, and make your cough more productive.

#### 1. What the medicine is for

Benylin Chesty Coughs Non-Drowsy is a medicine which is used to help relieve chesty coughs. It contains Guaifenesin (an expectorant) to help loosen mucus (phlegm) from the lungs and make it easier to cough up, and Levomenthol to help you breathe more easily by easing congestion.

The medicine is for use in adults and children aged 12 years and over.

#### 2. Before taking this medicine

This medicine is suitable for most people but a few people should not use it. If you are in any doubt, talk to your doctor or pharmacist.

#### ⚠ Do not use this medicine...

- If you have ever had a **bad reaction** to any of the ingredients.
- For a child under 12 years of age.

If any of these apply to you, **get advice from a doctor or pharmacist without using Benylin Chesty Coughs Non-Drowsy.**

#### ⚠ Talk to your doctor or pharmacist...

- If you suffer from **liver or kidney problems.**
- If you have been told by your doctor that you have an intolerance to some sugars.
- If you have had a **cough** for a few weeks that may be caused by **asthma**, or a cough which brings up a lot of mucus (phlegm).
- If you are taking **alcohol.**

If you are not sure about any of the medicines you are taking, show the bottle or pack to your pharmacist.

If any of these bullet points apply to you now or in the past, **talk to a doctor or pharmacist.**

#### ⚠ If you are pregnant or breast-feeding

- Ask your doctor or pharmacist for advice before taking this medicine if you are pregnant or breast-feeding.

**Manufacturer:** Famar Orléans, 5 avenue de Concy, 45071 Orleans, Cedex 2, France.

This carton was revised May 2014.

Benylin is a registered trade mark.

Design is an applied trade mark.



## Chesty Coughs

**NON-DROWSY**

**Guaifenesin & Levomenthol**

#### ⚠ Some of the ingredients can cause problems

- This medicine contains sucrose and liquid glucose. If you have been told by your doctor that you have an intolerance to some sugars contact your doctor before taking this medicinal product. This contains 3.49 g glucose per 5 ml. Contains 1 g of sucrose per 5 ml. This should be taken into account in patients with diabetes mellitus.
- This medicinal product contains 5 vol % ethanol (alcohol), i.e. up to 200 mg per 5 ml, equivalent to 5 ml beer, 2 ml wine per 5 ml. This can be harmful for those suffering from alcoholism. The ethanol content should be taken into account in pregnant or breast-feeding women, children and high-risk groups such as patients with liver disease or epilepsy.
- Ponceau 4R (E124) may cause allergic reactions.
- This medicinal product contains 16.42 mg sodium per 5 ml. To be taken into consideration by patients on a controlled sodium diet.

#### 3. How to take this medicine

Check the table below to see how much medicine to take.

- For oral use only.
- Do not use more than the stated dose shown.

#### ⓘ Children under 12 years

This medicine is not recommended for children under 12 years old.

#### ⓘ Adults and children aged 12 years and over

AGE	DOSE
Adults and children aged 12 years and over	Take Two 5 ml spoonfuls four times a day.
Do not take more than 4 doses in 24 hours. If symptoms persist, talk to your doctor or pharmacist.	