

NON-ADHESIVE & ADHESIVE FOAM



ACTIVHEAL® FOAM CONTACT



This dressing has been developed to offer excellent absorption properties alongside security and protection on moderate to heavily exuding chronic and acute wounds. The perforated wound contact layer minimises trauma during dressing changes, whilst the continuous adhesive coverage securely positions the dressing in place. This reduces the risk of leakage whilst the foam pad provides increased fluid handling when required. That's a combination that will give confidence to the clinician and the patient.



CLINICAL BENEFITS

All the benefits of our ActivHeal® Foam Adhesive dressing with the addition of:

- ✓ Perforated wound contact layer minimising trauma during dressing changes
- ✓ A continuous adhesive coverage providing extra security when required
- ✓ Bevelled edges to ensure the dressing stays in place, preventing accidental removal by shear between clothes and bedding
- ✓ Enhanced fluid handling properties



SIZES AND CODES

SIZE (CM)	DRESSINGS PER CARTON	PRODUCT CODE	NHS SUPPLY CHAIN CODE	DT PIP CODE
7.5 x 7.5	10	10011147	ELA597	377-9949
10 x 10	10	10011148	ELA598	377-9931
12.5 x 12.5	10	10011149	ELA599	377-9923
10 x 20 NEW	10	10011150	ELA600	377-9915
15 x 15	10	10011151	ELA601	377-9907
20 x 20	10	10011152	ELA602	377-9899
18 x 18.5 Sacral NEW	10	10011153	ELA603	377-9881

CASE STUDY

Patient S was a 72 year old man who was seen in a wound care clinic. He attended as an outpatient with an ulcer to the lateral side of his right foot. He had history of ischaemic heart disease, chronic obstructive pulmonary disease, and Type 2 diabetes. He also was a cigarette smoker and had a history of alcohol abuse.



Day 1

On initial assessment the wound was diagnosed as a neuroischaemic ulcer and had been present for 16 weeks. The wound bed was 100% sloughy and exudate levels were moderate. Following the initial assessment, the priority was to manage the exudate levels of the wound, therefore ActivHeal® Foam Contact dressing was applied.

Day 22

After a full assessment, the wound had autolytically debrided, there was now 100% granulating tissue and the wound had reduced in size. The exudate levels had reduced and the peri wound skin remained intact with no signs of maceration. It was decided that ActivHeal® Foam Contact would be continued to manage exudate and the dressing was changed every 3 days.

Day 36

During his final visit the wound was reassessed. The wound now had 100% epithelial tissue present and the peri wound skin remained intact. The clinician noted the ActivHeal® Foam Contact dressing conformed well to the wound and stayed in place. It allowed the dressing to be worn with the patient's own foot wear and allowed him to carry on with normal activities of daily living.

ACTIVHEAL® FOAM ADHESIVE

ActivHeal® Foam Adhesive is a 2 layer dressing consisting of a polyurethane bacterial barrier membrane with a centrally located hydrophilic foam pad and an acrylic adhesive border.

Indicated for moderate to heavily exuding wounds the dressing offers a pressure sensitive acrylic adhesive border ensuring the dressing remains in place allowing the patient to continue everyday activities confidently. The dressing conforms to the contours of the body which reduces the risk of rucking or catching on clothing and bedding.



CLINICAL BENEFITS

- ✓ Waterproof and bacterial barrier
- ✓ Soft and conformable
- ✓ Effective absorption properties
- ✓ Maintains a moist wound healing environment
- ✓ Reduces the risk of maceration



SIZES AND CODES

SIZE (CM)	DRESSINGS PER CARTON	PRODUCT CODE	NHS SUPPLY CHAIN CODE	DT PIP CODE
7.5 x 7.5	10	10010232	ELM161	358-3390
10 x 10	10	10009109	ELA210	304-3767
12.5 x 12.5	10	10009110	ELA211	317-0495
15 x 15	10	10009111	ELA212	304-3775
20 x 20	10	10009112	ELA213	314-6065

CASE STUDY

Patient H was an 82 year old lady resident in a nursing home. The patient had a grade 3 moderately exuding pressure ulcer situated over the coccyx which had been present for 6 months.



Day 1

The wound presented healthy granulation tissue however it had become inert. The tissue surrounding the wound was hydrated, healthy and there were no complaints of discomfort. Exudate levels remained moderate. The previous dressing was being changed every 2 days.

Day 9

The wound continued to improve with good epithelial growth. The patient's discomfort levels remained low and there were no signs of peri ulcer skin reactions. The dressing was easy to apply, remove and was atraumatic for the patient.

Day 24

The wound had continued to progress through the wound healing continuum with increasing amounts of epithelial tissue visible and a slight reduction in size.

ACTIVHEAL® FOAM NON-ADHESIVE

ActivHeal® Foam Non-Adhesive is a versatile dressing developed to offer protection and absorbency on moderate to heavily exuding wounds. Its 3 layer construction offers a low friction backing, soft highly absorbent foam and a perforated wound contact layer. This non-adhesive dressing is ideal when reducing trauma is a key part of the wound dressing regime; and its soft and flexible properties mean patients can wear it underneath clothing with comfort and confidence.

The ActivHeal® Foam Non-Adhesive range offers a variety of shapes and sizes including; the ActivHeal® Foam Heel dressing, a soft pre-moulded dressing, specifically designed to apply easily to the heel and other anatomical areas. The ActivHeal® Foam Tracheostomy dressing which features a versatile fenestration, allowing it to fit neatly around a tracheostomy tube, intubation tube, cannula insertion, external bone fixators and appropriately sized wound drainage tubes.



CLINICAL BENEFITS

- ✓ Waterproof and bacterial barrier
- ✓ Soft and conformable
- ✓ Effective absorption properties
- ✓ Maintains a moist wound healing environment
- ✓ Reduces the risk of maceration
- ✓ Low friction backing
- ✓ Low adherent wound contact layer minimising trauma to the wound during dressing changes

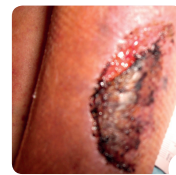


SIZES AND CODES

SIZE (CM)	DRESSINGS PER CARTON	PRODUCT CODE	NHS SUPPLY CHAIN CODE	DT PIP CODE
5 x 5	10	10009113	ELA214	314-6073
7.5 x 7.5	10	10009114	ELA245	NA
10 x 10	10	10009115	ELA216	304-3791
10 x 20	10	10011265	ELA246	317-0503
20 x 20	10	10009117	ELA218	314-6081
FOAM HEEL				
18 x 12	5	10010227	ELM160	356-1131
FOAM TRACHEOSTOMY				
10 x 10	10	10009118	ELA335	NA

CASE STUDY

Patient A was admitted to the unit with a fresh, sizeable skin tear to her left shin. The skin on her right leg was in danger of further breakdown. Her past medical history included left hemiparesis due to cerebral infarct, osteoarthritis, hypertension, shingles and low mood.



Day 1

The skin tear and flap measured 7cm at the widest point. The dermis and the epidermis had been pulled apart, however the flap was almost intact proximally. Distally the epidermal flap was lost, leaving a small area of dermal tissue exposed. The wound was assessed and found to have no necrosis or slough, moderate levels of exudate and no sign of infection. Additionally the flap was also viable.

Day 12

The wound continues to show improvement following the use of Activ-Heal® Non-Adhesive Foam. Proximal wound margins now apposed. No signs of maceration or breakdown of surrounding skin. The wound area has reduced in size and contains both granulation tissue and epithelial tissue.

Day 32

The wound showed a good level of healing and, as a result, the patient was discharged from the unit back into the community. The District Nurses were requested to moisturise both legs, then continue with ActivHeal® Non-Adhesive Foam, held in place with a tubular bandage to protect the delicate, newly healed tissue and prevent tissue breakdown.