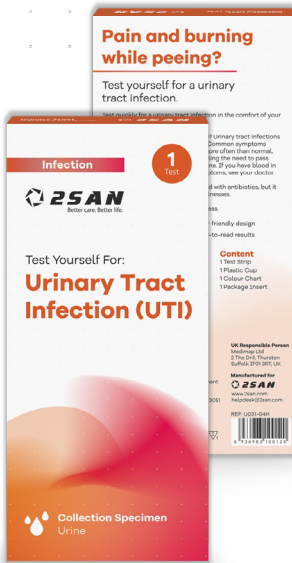


# Urinary Tract Infection (UTI)

FOR SELF-TESTING USE



## Pain and burning while peeing? Test yourself for a urinary tract infection.

Do you have pain when passing urine? Urinary tract infections are common, particularly in women. Test quickly for a urinary tract infection in the comfort of your home, with results in 2 minutes.

Common symptoms include tummy pain, passing urine more often than normal, burning pain when passing urine, feeling the need to pass urine immediately, as well as cloudy urine. If you have blood in your urine with none of the other symptoms, see your doctor.

Urinary tract infections can be treated with antibiotics, but it is essential to test first to rule out other illnesses.

Not recommended for pregnant women, women aged over 65, if you have visible blood in your urine, or have a catheter. If you have any red flag symptoms see a doctor immediately: frank blood in the urine, lower back pain, shivering, nausea, vomiting or confusion.

✓ **Result in 2 mins**

✓ **Urine test**

## Specification

**Intended Use** Biochemical assay for the qualitative detection of analytes in urine

**Storage** 2-30°C

**Specimen Type** Urine

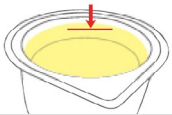
**Time to Result** 2 minutes

**Shelf Life** 2 years

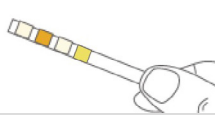
## Components

- 1 Test strip
- 1 Plastic cup
- 1 Colour chart
- 1 Package Insert
- 1 test per pack

## Procedure



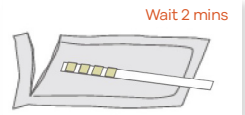
**I.** Collect urine



**II.** Take the strip test out of the pouch



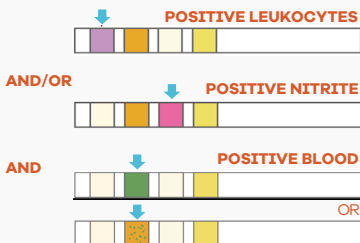
**III.** Immerse the strip



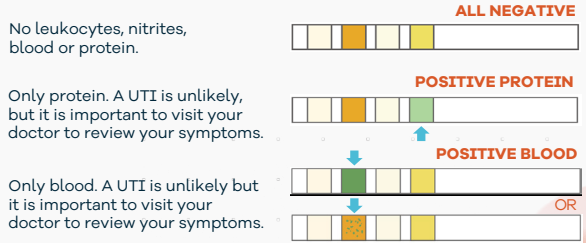
**IV.** Wait for 2 mins and read\* the results. Take a photo of your test result to share with a health professional.

## Interpretation

### POSITIVE FOR URINARY TRACT INFECTION



### NEGATIVE FOR URINARY TRACT INFECTION



No leukocytes, nitrites, blood or protein.

Only protein. A UTI is unlikely, but it is important to visit your doctor to review your symptoms.

Only blood. A UTI is unlikely but it is important to visit your doctor to review your symptoms.